

WHATS ON THIS MAY AT...

# Pleasant Mountain Music

PAGE 1 OF 3



## Handpan Clinic

Registration is open for our highly anticipated Handpan Clinic! An interactive 2-hour clinic to get folks acquainted with this unique instrument. [Register here!!](#)

- **Handpan Clinic (2-hours)**  
Monday May 26 @ 6:30pm | \$70

## June Recitals

### All-Ages Recitals

Sunday June 22,  
3 times to choose from:  
Recital 1 @ 2:30-3:45pm  
Recital 2 @ 4:00-5:15pm  
Recital 3 @ 5:30-6:45pm  
[SIGN UP HERE](#)

### Adults Wine & Cheese Nite

Friday June 26  
Three sets: 6:30, 7:45, 9:00  
[SIGN UP HERE](#)

*All recitals are by-donation:  
\$10 suggested*



## Shrek the Musical

Our Production of **Shrek the Musical (Jr.)** happens in June!

Support our performers by coming over to the Gateway Theatre in Richmond between June 12 to June 15!

*Tickets go on sale this MAY! As soon as they can be purchased, we will post QR codes around PMM!*

## Musical Theatre Month

To celebrate Musical Theatre production, we're offering several fantastic clinics for those who want to get a taste of the Musical Theatre experience, as well as those who want to refine their skills.

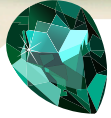
Coming in June!

- **Intro to Musical Theatre Performance (ages 10-18)**
- **Adult Musical Theatre (19+)**
- **Youth Character voice**
- **Adult Character Voice**
- **Mixed Voice for Teens**



## May Long Weekend and Mother's Day

**WE ARE OPEN and lessons are scheduled on May 11, over the long weekend of May 17-19, and on May 20 (Victoria Day)**  
*Lessons cancelled with less than 2-weeks (14-days) notice will incur a charge. We do not offer make-ups or refunds for no-shows.*



## Summer Camps!

Back by popular demand PMM is offering our 3 camps with the inimitable teacher Chersea this summer. Chersea, *who just had a roaring success at Kiwanis international music festival for all her vocalists*, will provide a junior Pop Star(t) Camp, and the legendary Songwriting & Recording Camp this summer. Hurry though, spots are limited and are filling QUICKLY! Register today!

### Pop Star(t) Songwriting

Ages 9-12, \$625

Jun 30-Jul 4, 10am-4pm, Daily

### Senior Songwriting Camp

Ages 13-19, \$625

July 7-11, 10am-4pm, Daily

**\*\*WAITLISTING INTEREST\*\***

### Senior Songwriting and Recording Camp, 2-weeks

July 7-11 (\$625) AND July 14-18 (\$900)

**\*\*WAITLISTING INTEREST\*\***

### Junior Pop Star(t) Camp

Ages 6-8, \$475

Jul 5-9, 9am-1pm Daily | \$425

## August Camps

### Introduction to Musical Theatre Camp

Ages 10-18, \$625

Aug 4-8, 10am-4pm, Daily

### Musical Theatre Intensive

Ages 10-18, \$625

Aug 11-15, 10am-4pm, Daily



## Musical Fundraiser

A huge shout out to everyone who came by PMM on April 11 for the MTE's inaugural fundraising event

*Thanks to you our audience, we raised \$800 (after expenses) for upcoming costs for production of Shrek Jr!*



## May Drop-In Events

### Sing-a-Long Jam Night

Sat May 17 - 8pm

### EDDIE LAM JAM Open Mic

Fri May 23 - 8:30pm

### Heavy Metal Karaoke Drop-In

Sat May 24 - 8pm

All Events are by Donation

## About Us

2435A Granville Street

@pleasantmountainmusic

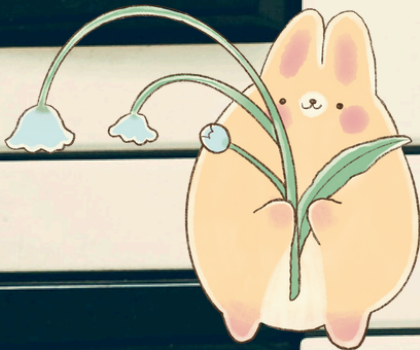
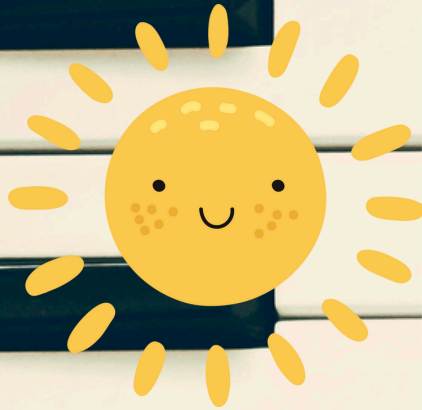
www.pleasantmountainmusic.ca

778-872-8422

inquiries@pleasantmountainmusic.ca







## Personnel Updates

### ***We have some news to share!***

The back office of PMM is expanding (finally) and that means we have some introductions to announce! So without further ado, please welcome the one and only, *director of showmanship himself*, CHRIS KING to officially take on PMM's Studio Manager role. He'll start mid-May, and will be our go-to personnel for scheduling assistance, facilities maintenance, and event support. He'll continue to host our private Karaoke parties and the seasonal recitals. You'll be seeing him lots more around the studio, so please introduce yourself, if you haven't already met Chris, the next time you're in!

So if Chris will be handling operations, what's happening with Chersea and Sarah? Well the great news is, Chersea continues to not only *slay* at Kiwanis festival and provide her students performance and recording opportunities, she'll continue to teach private lessons, Musical Theatre Ensemble, and summer camps until July. In August ***she gets hitched*** <3 so be sure to wish her the absolute best as a soon-to-be newlywed! Her role as Creative & Music Director of Musical Theatre Ensemble remains steadfast, so no changes there. Chersea will return to teaching in September 2025.

As for Sarah, that's going to be the biggest upheaval of all. Wearing the hat of scheduling manager, teacher liaison/HR manager, bookkeeper, accounts manager, program coordinator, marketing & advertising coordinator, and ***also*** teacher isn't the most...*sustainable*. Which has lead to a decline in response time for account issues. With Chris stepping in to shore up PMM's operations, Sarah will receive a promotion to Studio Director allowing her to tackle the big picture items for PMM! Though she'll take a temporary step back from teaching (*and her students have been notified!*) she looks forward to creating new partnership opportunities, working with our instructors to create and implement unique programming and furthering her own skillset by finishing her RCM teacher training, through the ARCT certification in Piano Pedagogy.